

# Multi-parameter monitoring

## *A general overview*

Eliza Calder

State University of New York at Buffalo



What is multi-parameter monitoring ?

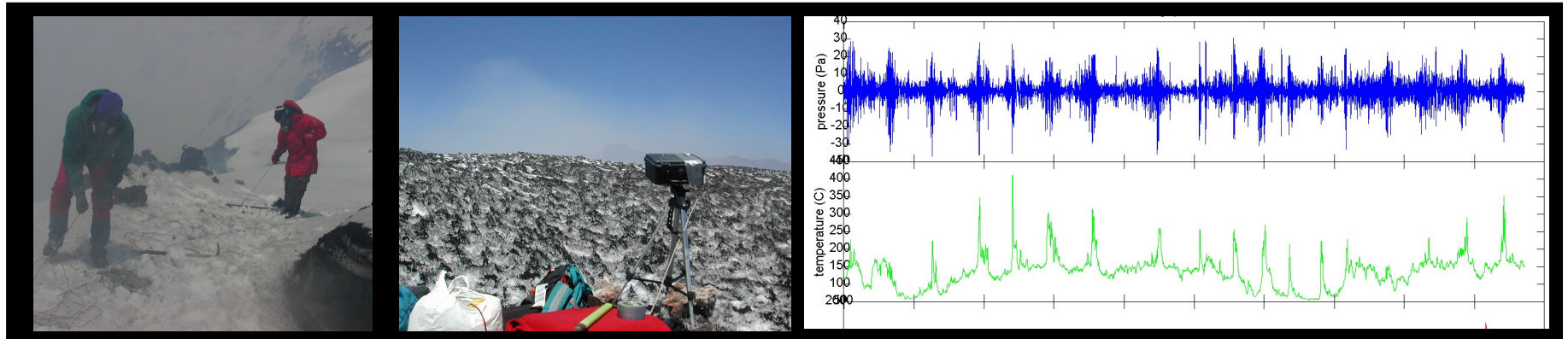
What are we trying to measure ?

What are the problems with it ?

Where are we going with it ?

# Q1: What is multi-parameter monitoring ?

## Why are we interested in it ?



## Simple thought experiment

Process : Tourist getting on a London bus.

Methods : COV Workshop Monitoring Team





# Remote sensing

- **Simon Carn** (gas spectroscopy) : Variations of gas species and concentrations over time, source of emissions migrates with time.
- **Simon Carn & Fred Prata** (satellite-based thermal and ash remote sensing) : Little hot spot coalesces with big hot spot, then track movement across town – and it emits a plume of diffuse particles.
- **Nick Varley** (ground-based gas and thermal sensing) : Large object has hot front, and hot gas plume comes out the back of it and that these signatures increase when the object moves.
- **Franco Tassi** (aqueous geochemistry) : may detect some traces in local surface water of a local ‘polluter’.

⇒ **Spectral imaging of surface characteristics associated with, or emissions resulting from, the activity.**

# Geophysicists

- **Greg Waite** (Seismicity) : Detect ground tremor generated by the moving bus, when it stops and starts, environmental noise generated by the occupants. Detect the response of the road (brittle failure?) caused by the load of the bus.
- **Jeff Johnson** (Infrasound) : Detect engine 'noise' (explosions) and perhaps noise associated occupants.
- **Halldor Geirsson and Jo Gottsman** (Ground deformation and geodesy, gravity) : Object undergoes lateral displacement, and reassure us object doesn't inflate or subside.

**=> Detecting motion generated by (mostly) internal physical processes.**

# But...

- No single method can tell us it's a bus picking up a passenger.

->Need to combine approaches, to reduce degrees of freedom.

- No single method knows where the bus came from or what happens to it in the future (so if it were an isolated event we would struggle to understand it).

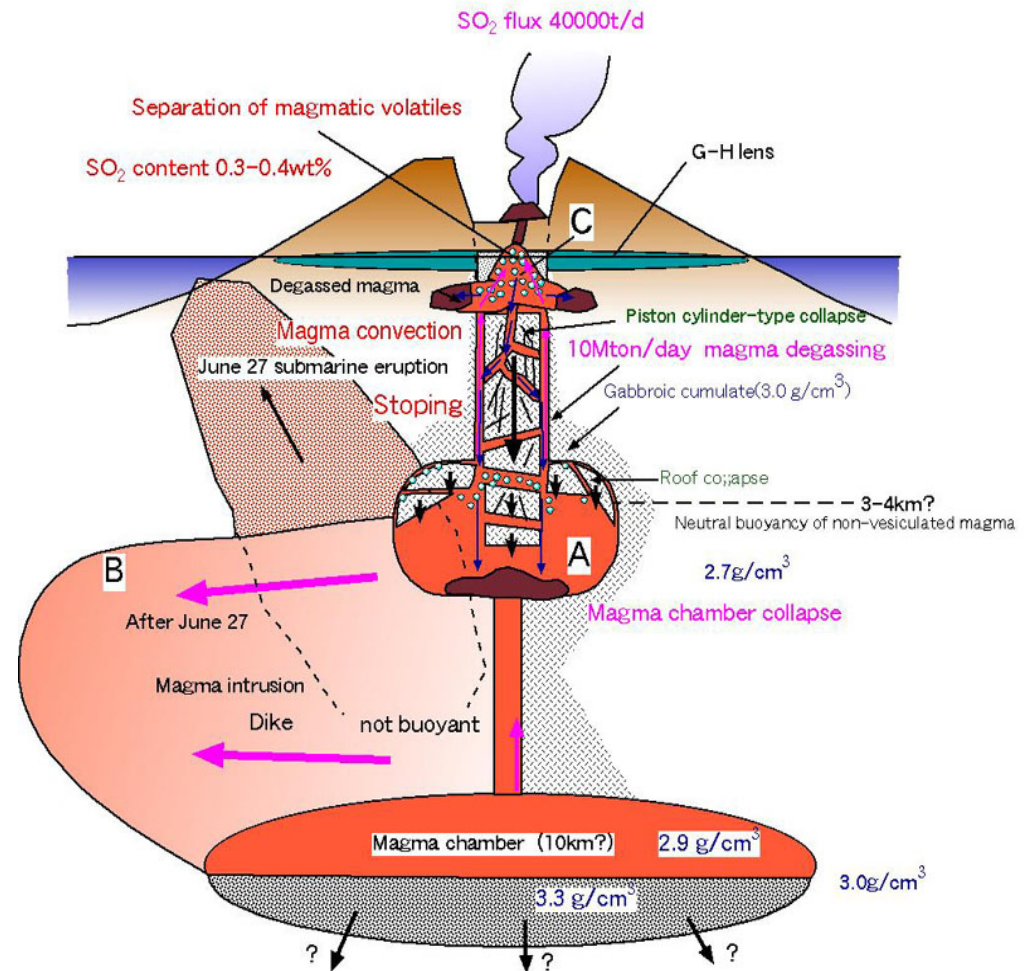
->But repeated observations (different times & places), improve our chances of a better understanding.

# Volcanic systems are complicated natural systems

e.g. Miyakejima, Japan

Objective of multi-parameter monitoring is to build an understanding of the internal workings of active volcanic systems with their complex plumbing systems and where material properties change with time.

Based on collecting disparate data sets and making sense of the common story that they tell.



<http://staff.aist.go.jp/kazahaya-k/miyakegas/COSPEC.html>

Geological Survey of Japan

## Q2: What are we trying to measure ?

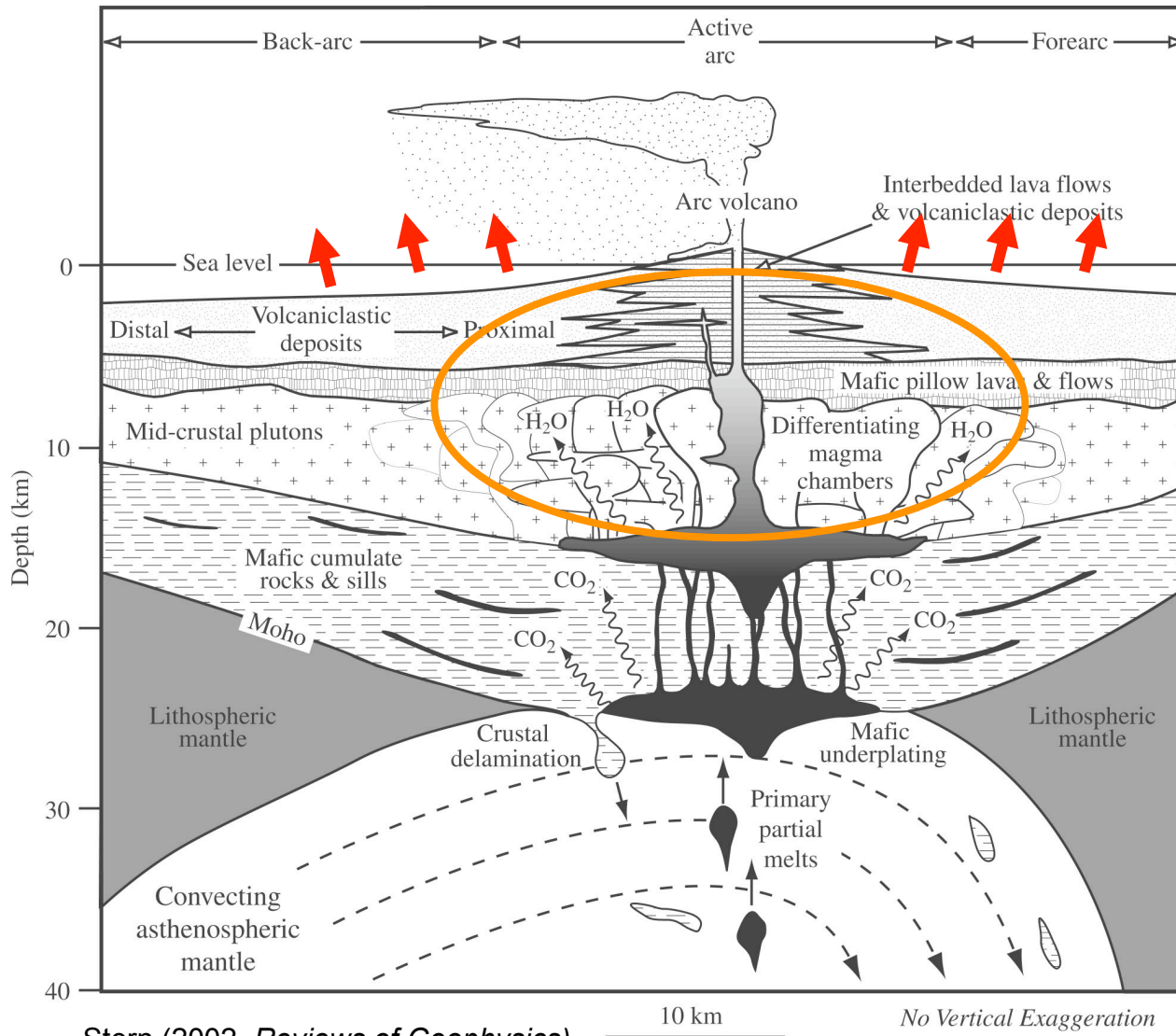
Note: Focus on application not methods

However, Methodology or (technology involved) defines limits of what can practically be measured. Easy to let the methodology guide research

1. Deep plumbing systems
2. Shallow plumbing (explosive, effusive, dome building)
3. Surface Processes (explosive, effusive, dome building)



# 1. Deep Plumbing (Macroscopic)



Schematic diagram of *deep* plumbing of a stratovolcano in an oceanic arc setting

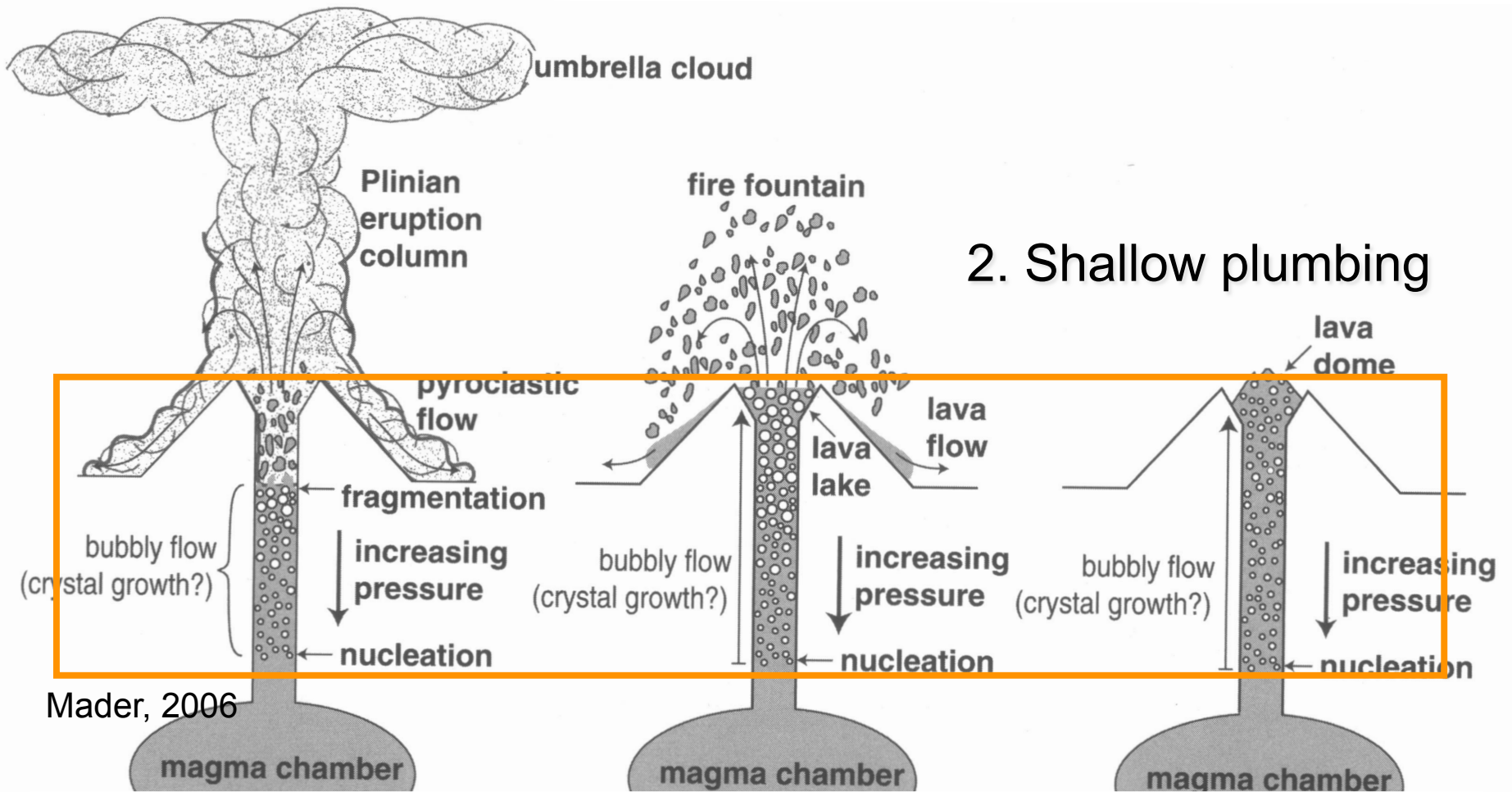
## Processes

Rising & ponding of new magmas  
Dike injection  
Interaction with hydrothermal systems

## Tools

Ground Deformation  
Gravity  
Seismics  
Petrology

Important for long-term forecasting of eruptive (and unrest) episodes



## 2. Shallow plumbing

Explosive eruptions

Effusive eruptions

Lava-dome eruptions

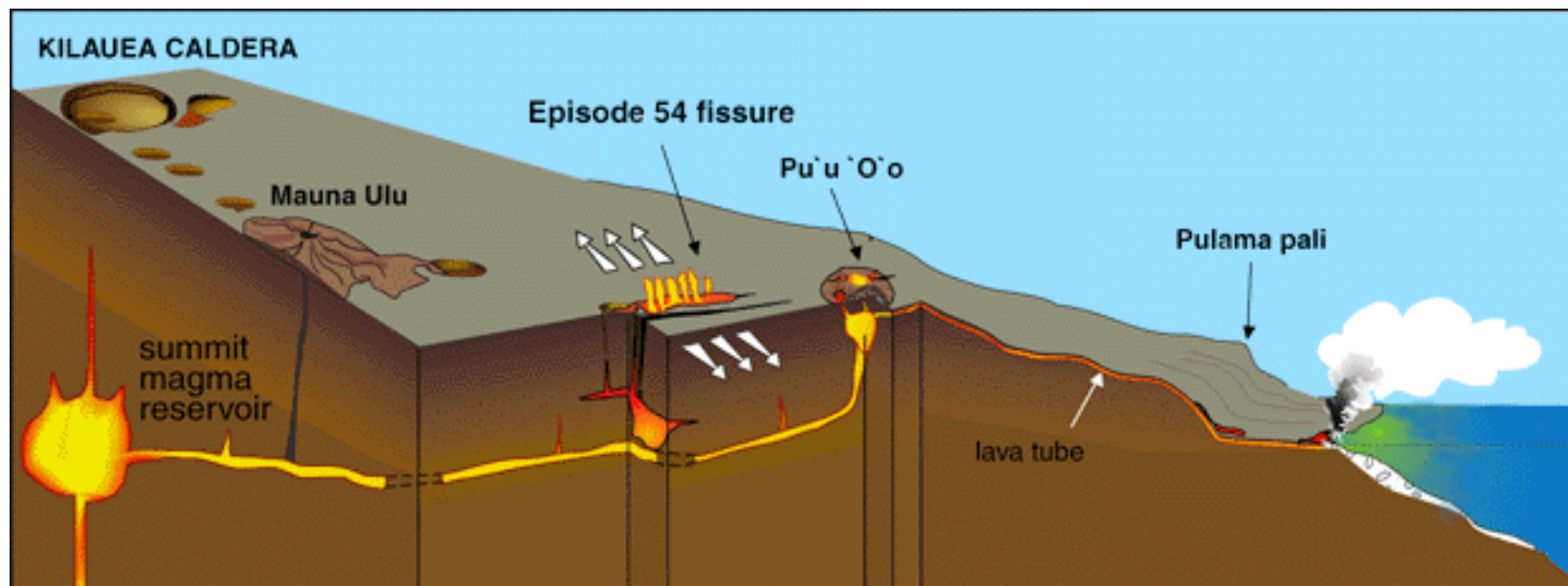
Bubble nucleation, rise, coalescence  
 Fragmentation  
 Crystal growth/solidification  
 Conduit flow  
 Conduit convection

Seismicity  
 Infrasound  
 Gas spectroscopy  
 Thermal remote sensing

# e.g. Shallow plumbing in effusive systems, Kilauea, Hawaii

Complicated plumbing system  
Spatial dimension important  
Utility of some methods over others

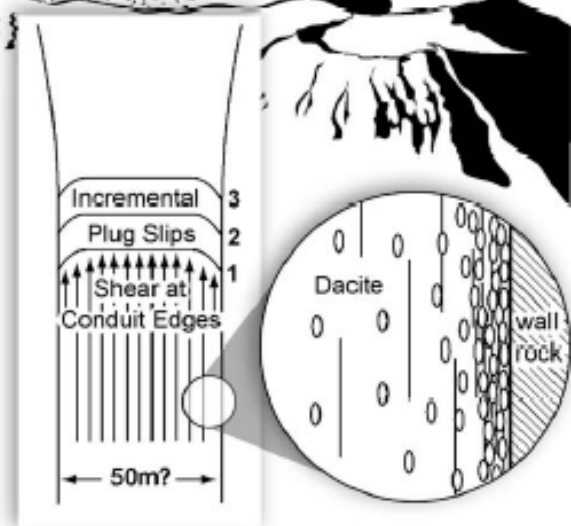
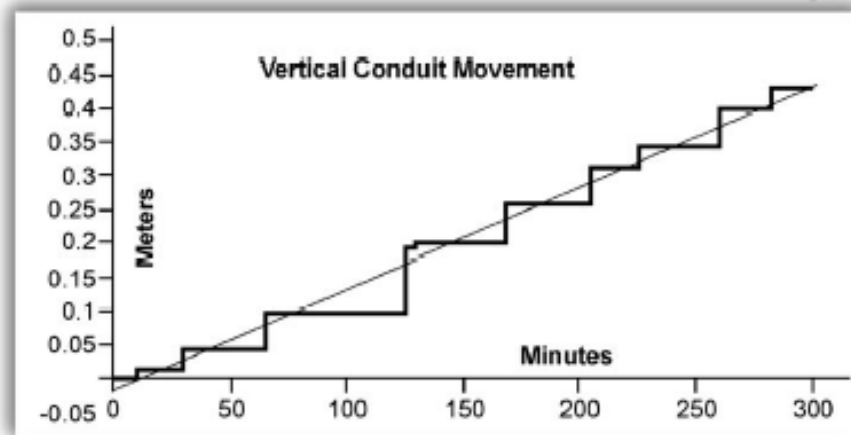
Gas  
Deformation  
Gravity  
Seismics  
Thermal Remote sensing



# e.g. Shallow plumbing in lava dome system, Santiaguito, Guatemala

More 'simple' plumbing system  
Spatial dimension less important  
However, magma properties changing  
with depth, degassing induced  
crystalization, and high pressures  
building up.

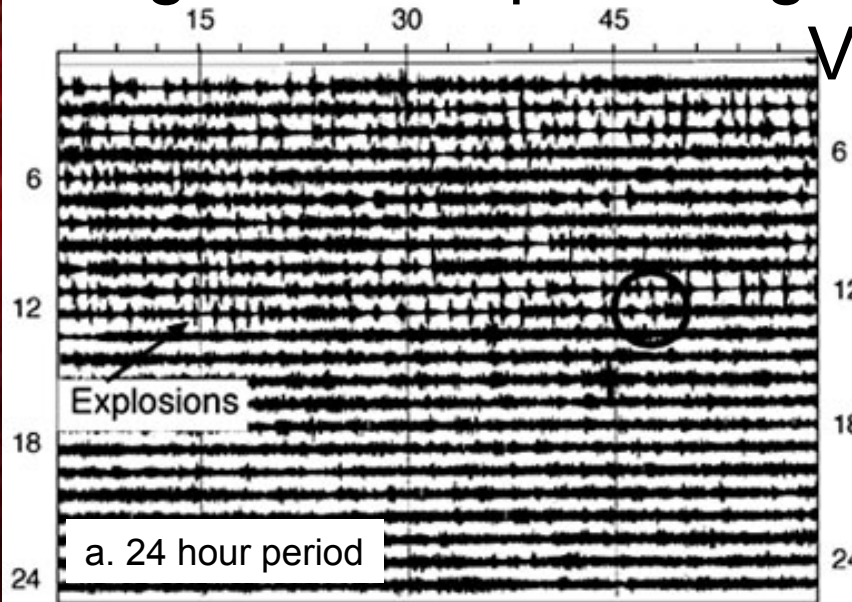
Thermal Remote sensing  
Seismics  
Infrasound  
Gas



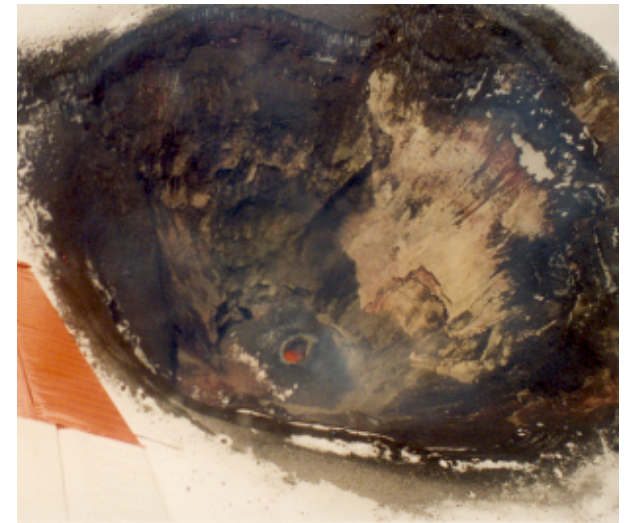
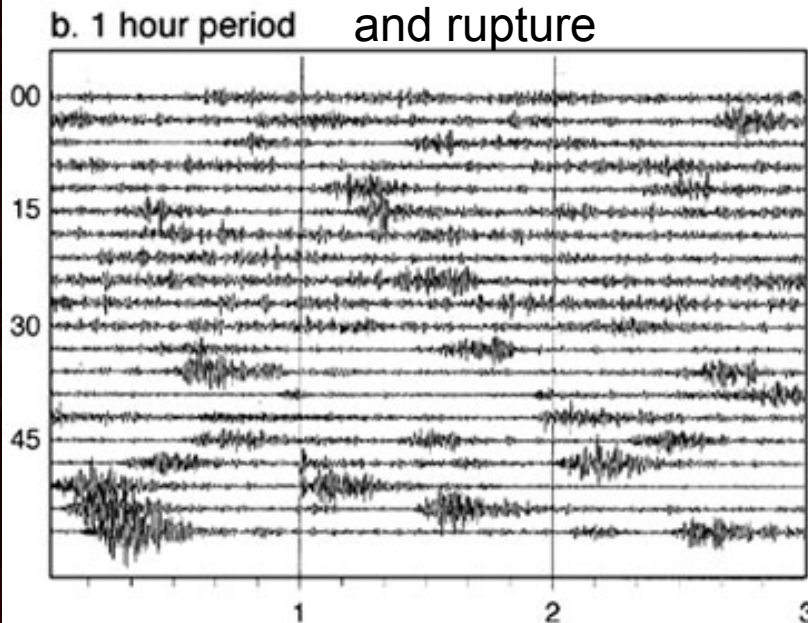
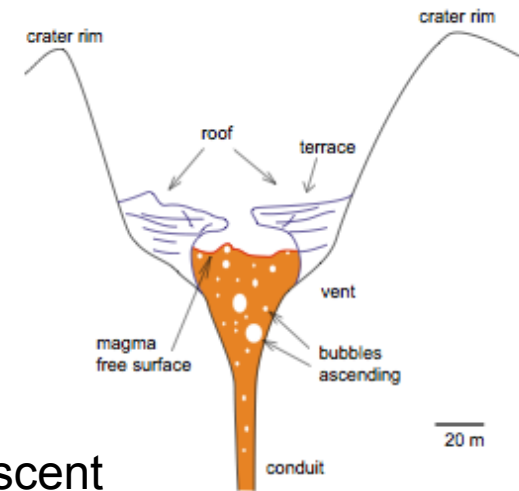
Santiaguito, Guatemala, from  
Bluth & Rose, 2004



# e.g. Shallow plumbing in effusive systems, Villarrica, Chile



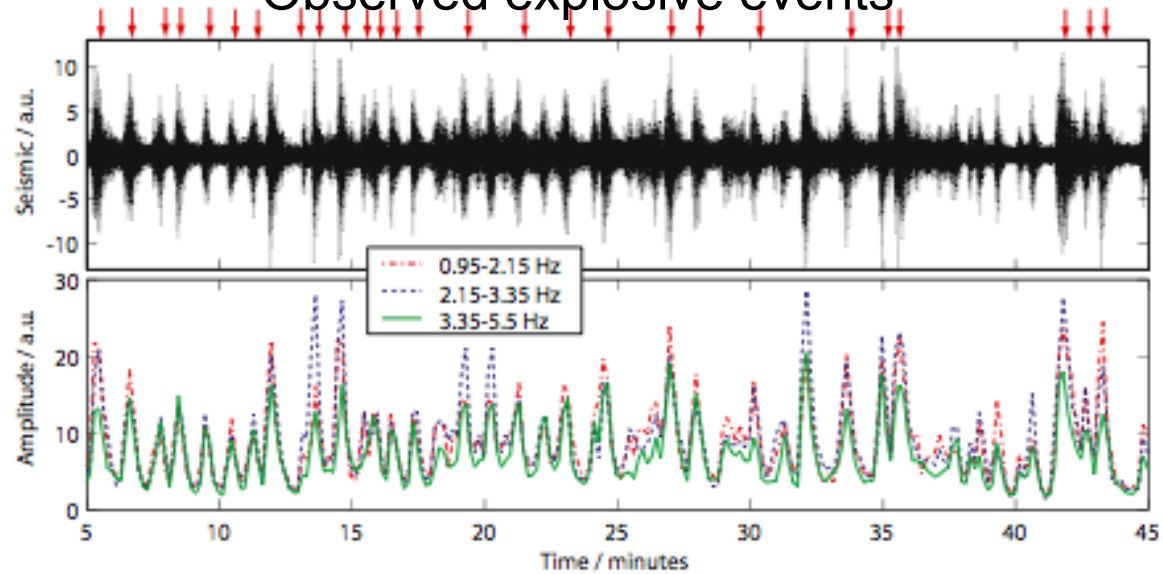
Semi-continuous gas slug ascent  
and rupture





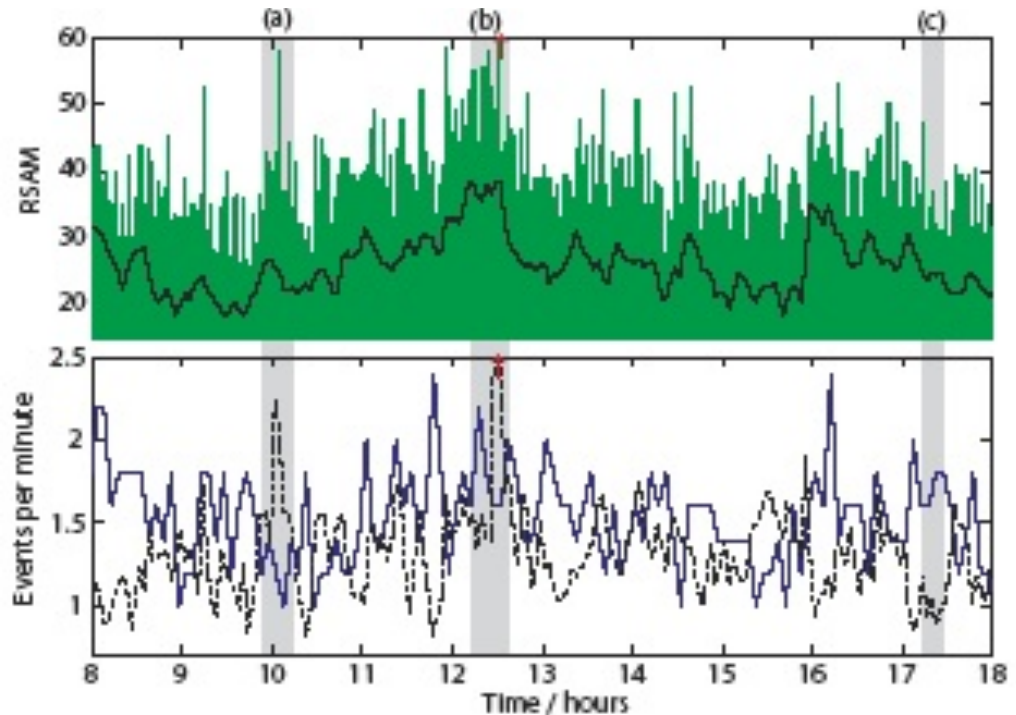
Palma et al, 2010

## Observed explosive events

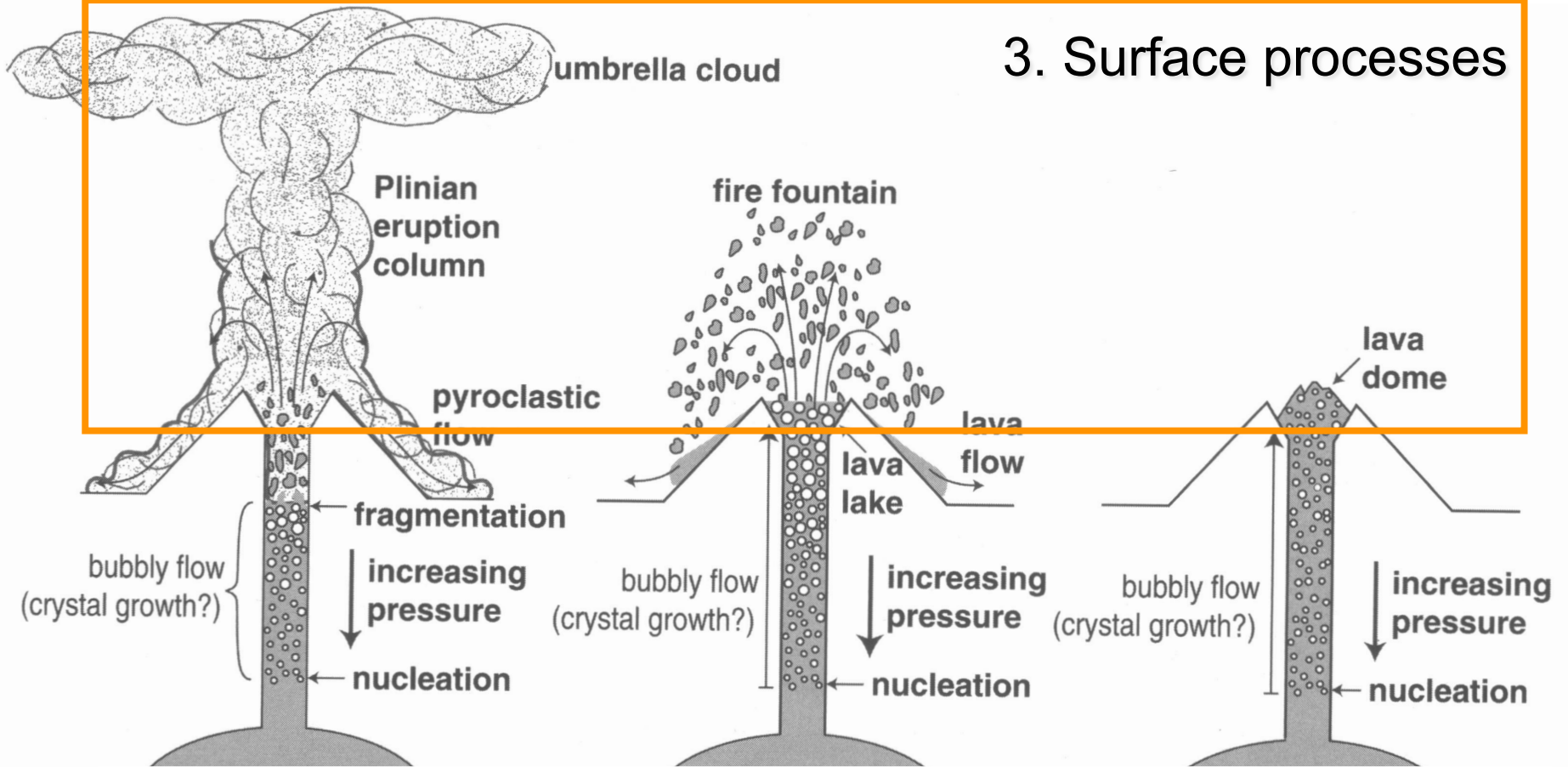


Observational data is 'data' - most usefully captured on timed digital video !

Utility of seismic data limited (short period, single component) but combined with observational data - source of transients clearly linked to surface explosions.



### 3. Surface processes



Plume characteristics (proximal/distal)  
Fragmentation  
Degassing  
Lava extrusion characteristics  
Flow processes

Visual Observations/video  
Thermal imaging  
Gas spectroscopy/imaging  
Seismics  
Radar  
Remote sensing

# e.g. Surface Processes in lava dome systems, Soufriere Hills Volcano, Montserrat

MBLG.BHZ 200701141141.UTC

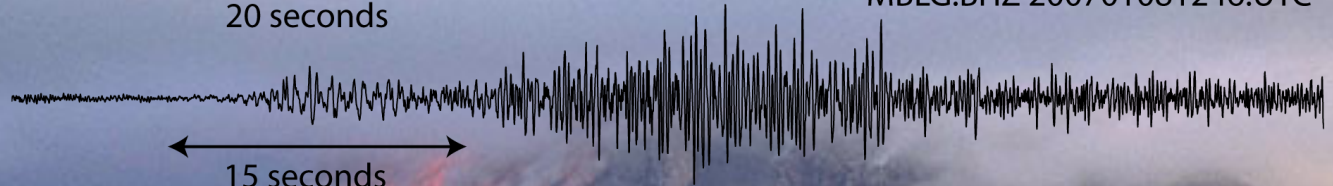
Rockfalls



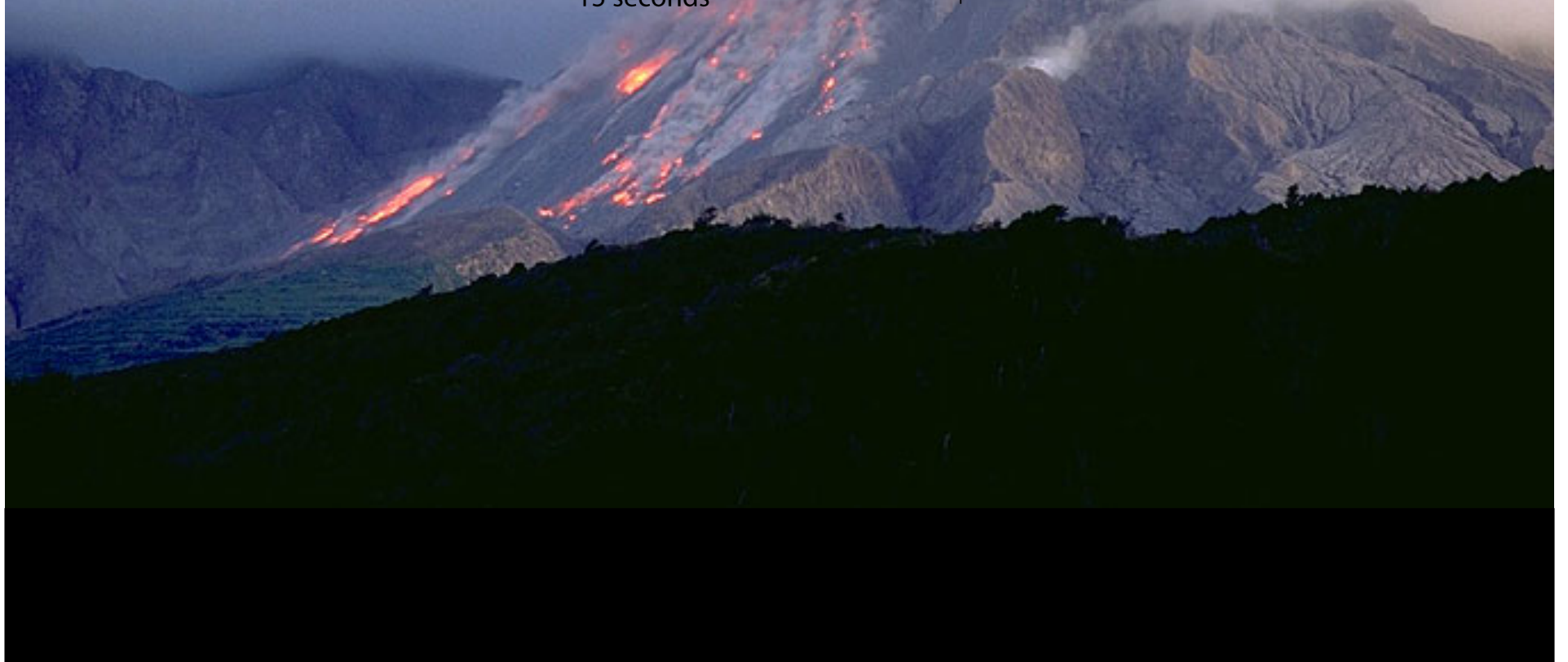
← 20 seconds →

MBLG.BHZ 200701081246.UTC

LP-Rockfalls



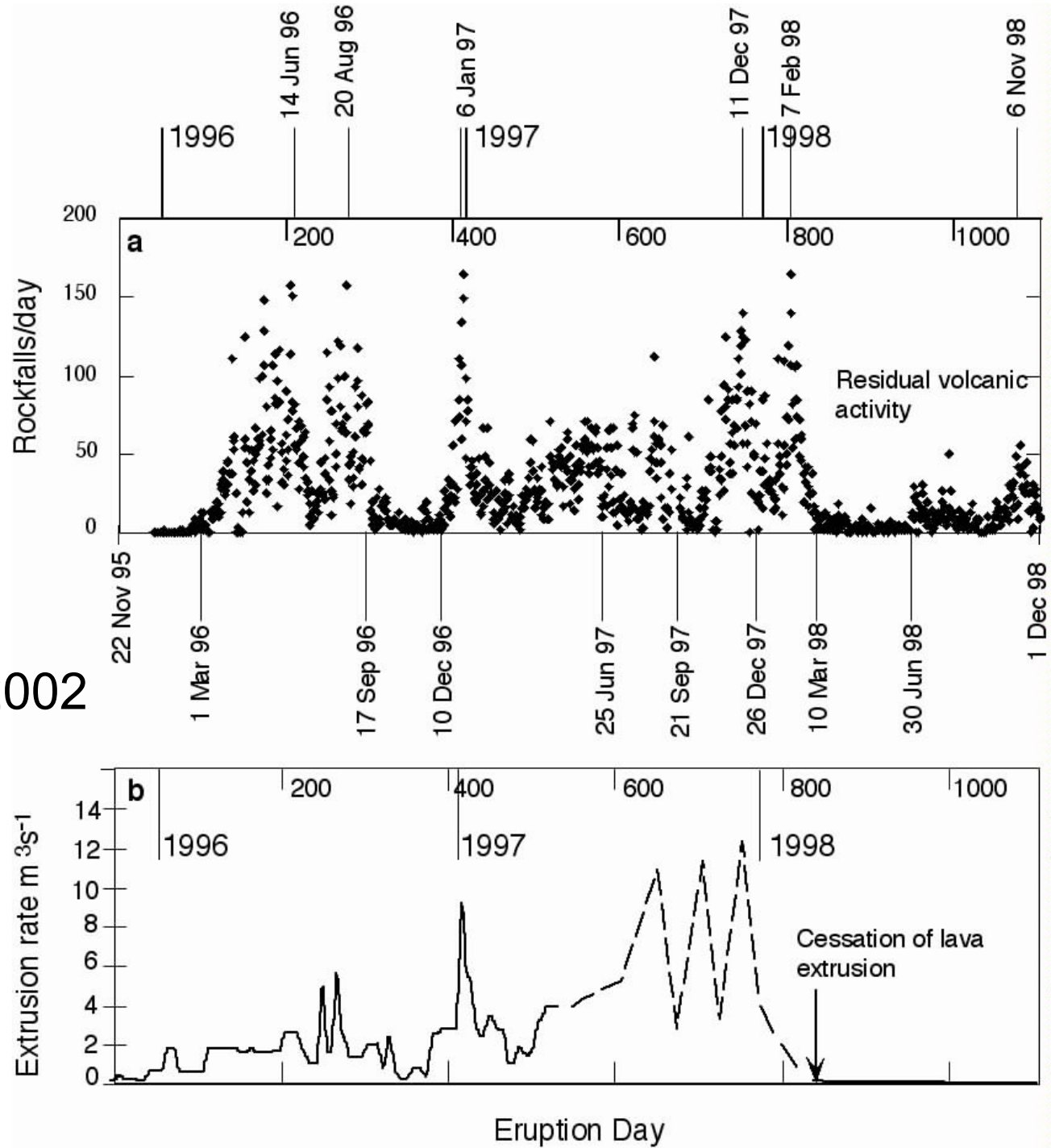
← 15 seconds →





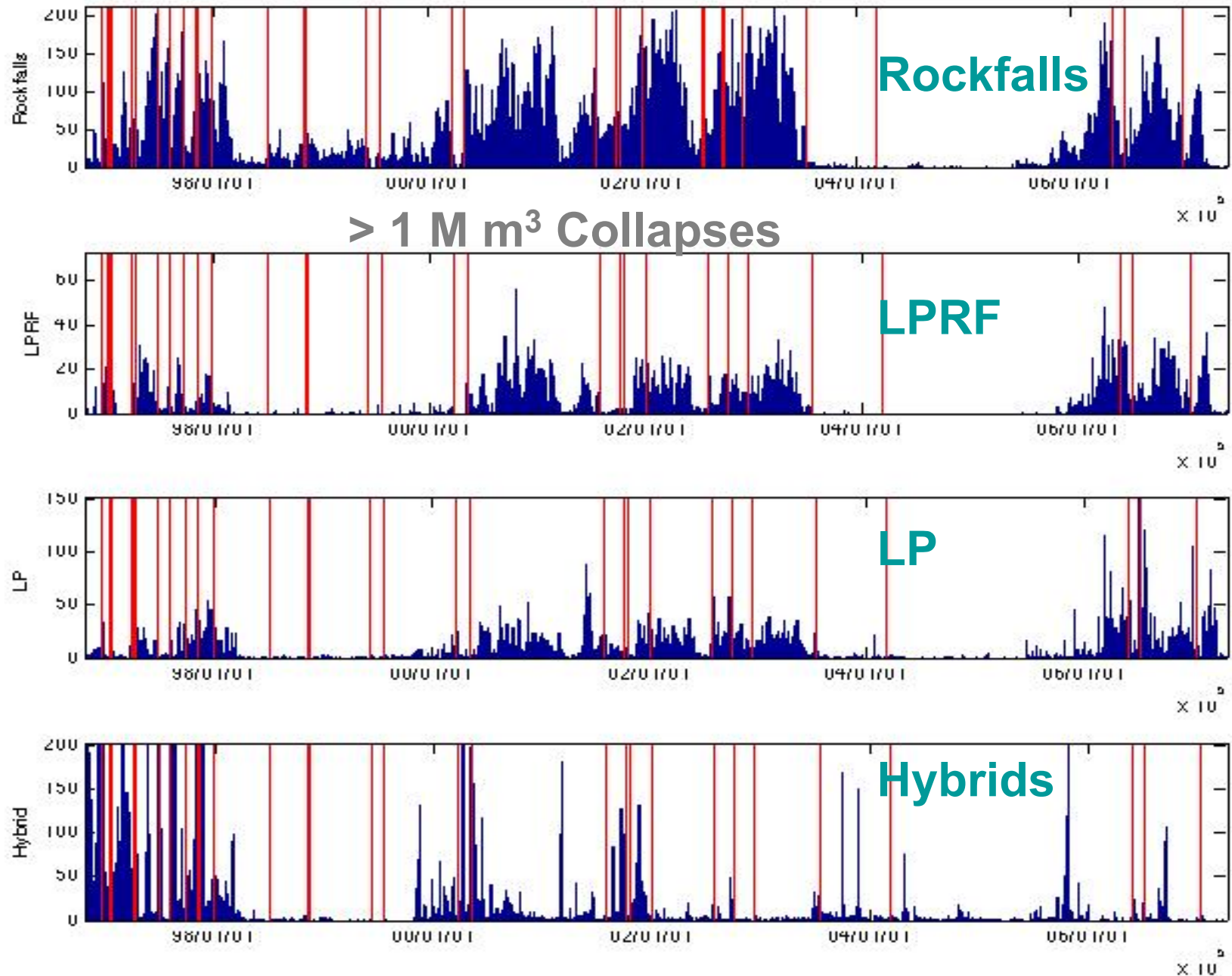


Rockfalls and  
extrusion rate  
Calder et al., 2002





# Other seismic signals as indicator of internal processes



Surface process is telling us about dynamics lava extrusion

# Q3: What are the problems ?

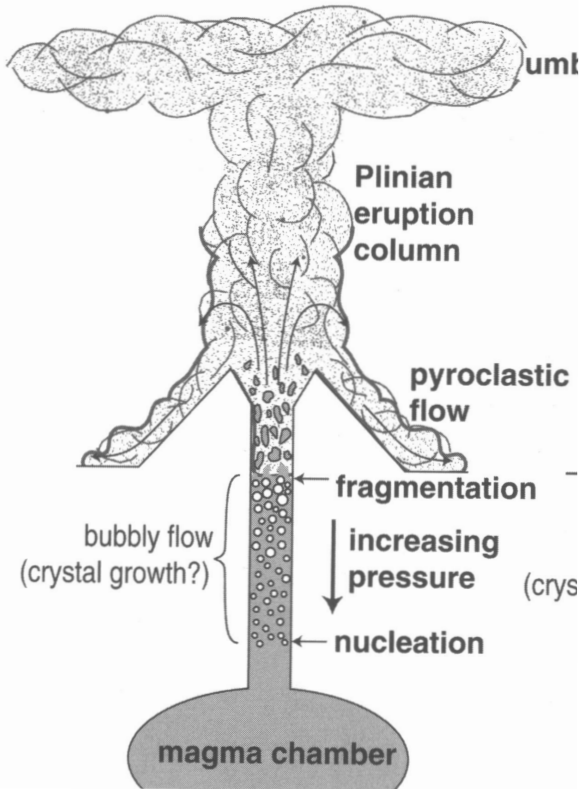
## Required Set of Initial Conditions

- People - involves willingness to collaborate between experts
- Instrument pools
- Active, accessible volcanoes
  - Such as Persistently active systems
    - Stromboli
    - Kilauea
    - Erebus
  - Or Longstanding eruptions
    - Soufriere Hills, Montserrat
    - Santiaguito, Guatemala
    - Mount St Helens
    - Merapi

Do we/can we cover Major Explosive eruptions adequately ?

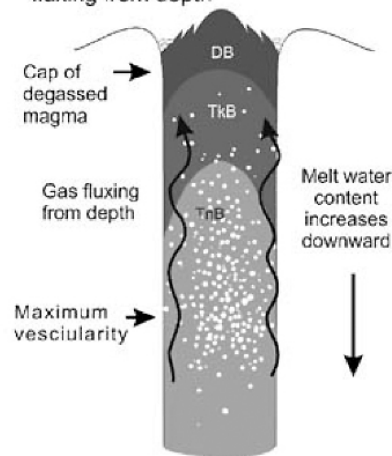
# Shallow plumbing in Vulcanian systems

Relatively small,  
often repetitive

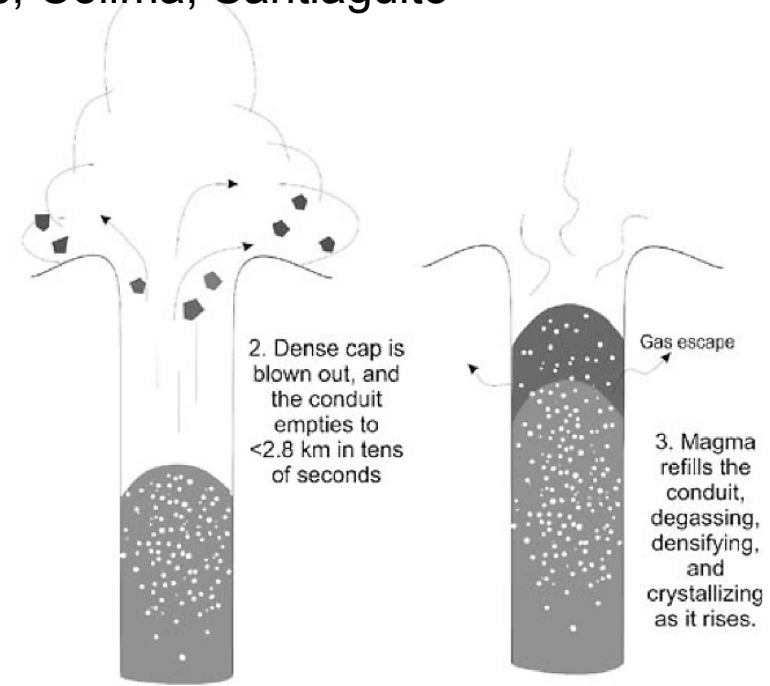


e.g. Monserrat, Galeras, Colima, Santiaguito

1. Magma fills the conduit and densifies, the conduit seals and pressurizes, and shallow magma equilibrates with gases fluxing from depth



2. Dense cap is blown out, and the conduit empties to <2.8 km in tens of seconds

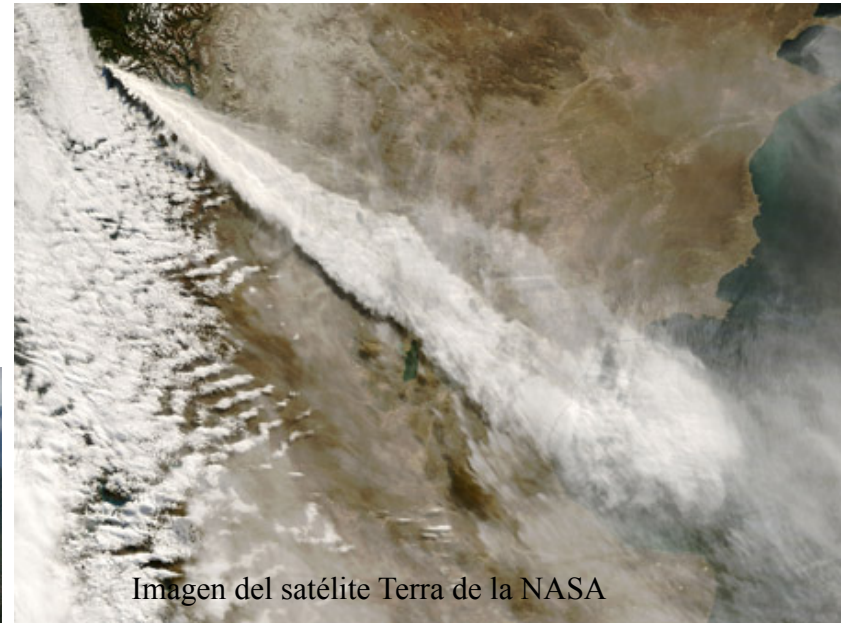
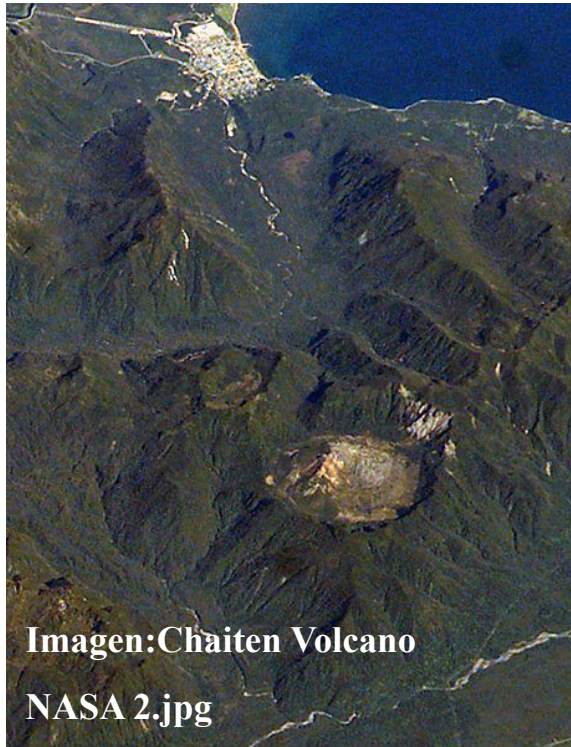


3. Magma refills the conduit, degassing, densifying, and crystallizing as it rises.

Cashman et al., 2006



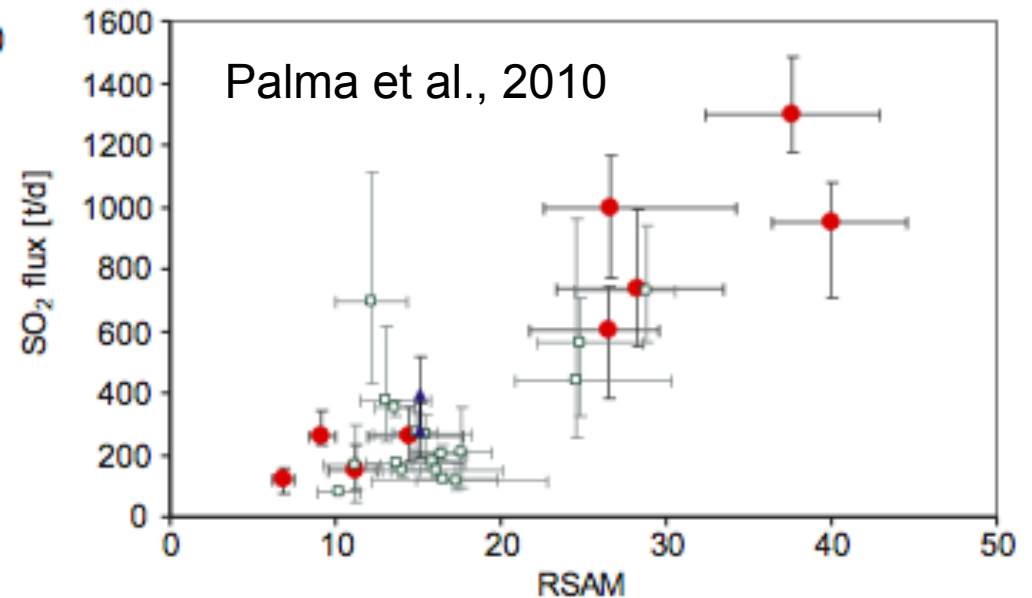
# Chaiten 2008, Chile



# Q3: What are the problems ? ..continued

## Measuring

Instrument-determined limitations on temporal resolution of data :  
e.g. COSPEC surveys few times/day (now much improved DOAS)  
e.g. Continuous seismic/ infrasound etc



Measuring over timescales over which volcanic processes of interest operate:

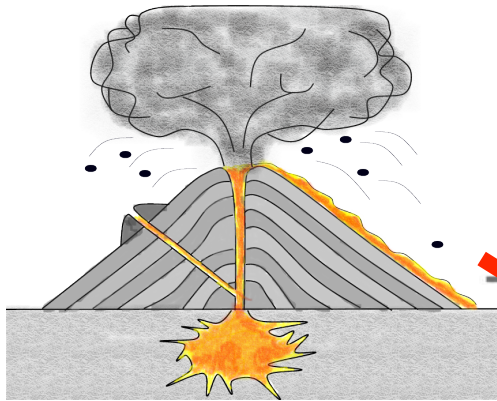
- Timescale of a sequence of bubbles rising and rupturing in a strombolian system (seconds-minutes)
  - Timescale of conduit convection (weeks-months)
  - Timescales of injection of new basaltic magma into an andesite magma chamber (months-years)
- (will come back to this)



## Q3 : What are the problems ? ..continued

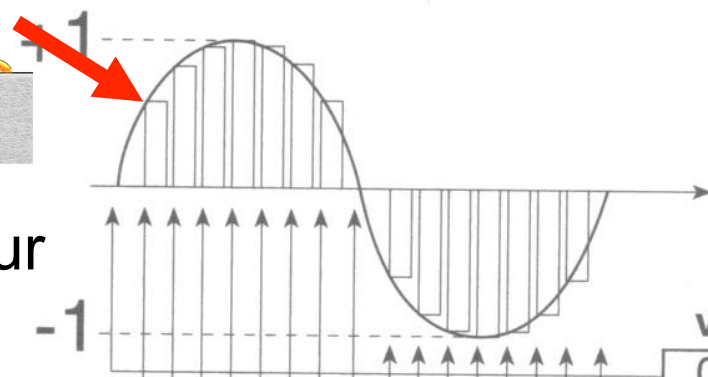
### A small list of few big problems

- The logistics of using a common time
- Instruments are filters
- Data don't always seem to tell the same story
- Often have to measure important things indirectly
  
- Analysis of large data streams - relatively new problem for geologists (need to become proficient in time series analysis and other statistical tools etc).



# Instruments as filters

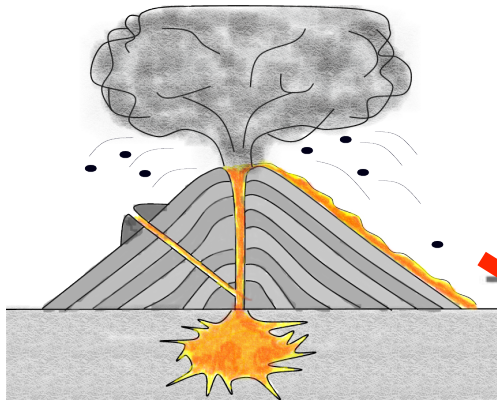
Volcanic behaviour  
(analog signal)



Instrument #1  
Digitizes signal

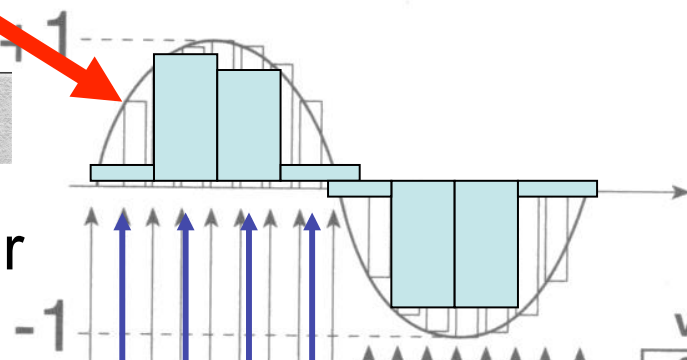
value	address
0	00
0.3827	01
0.7071	02
0.9239	03
1	04
0.9239	05
0.7071	06
0.3827	07
0	08
-0.3827	09
-0.7071	10
-0.9239	11
-1	12
-0.9239	13
-0.7071	14
-0.3827	15
0	16

Signal is  
filtered



# Instruments as filters

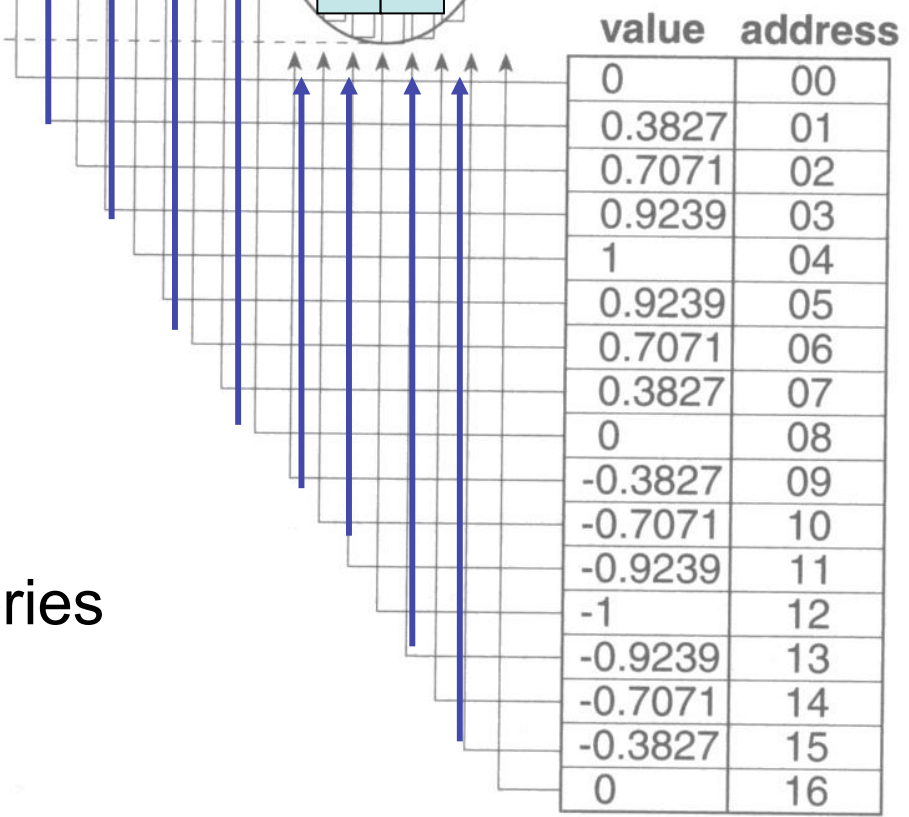
Volcanic behaviour  
(analog signal)

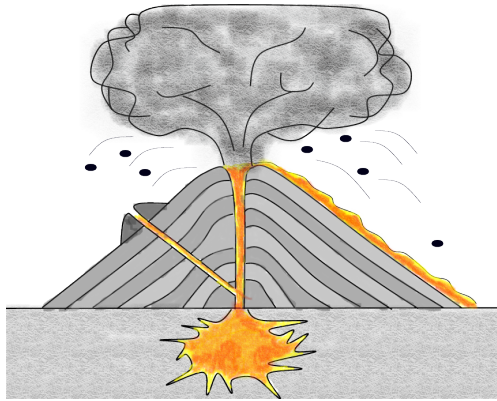


Instrument #1  
Digitizes signal

Instrument #2  
Digitizes signal

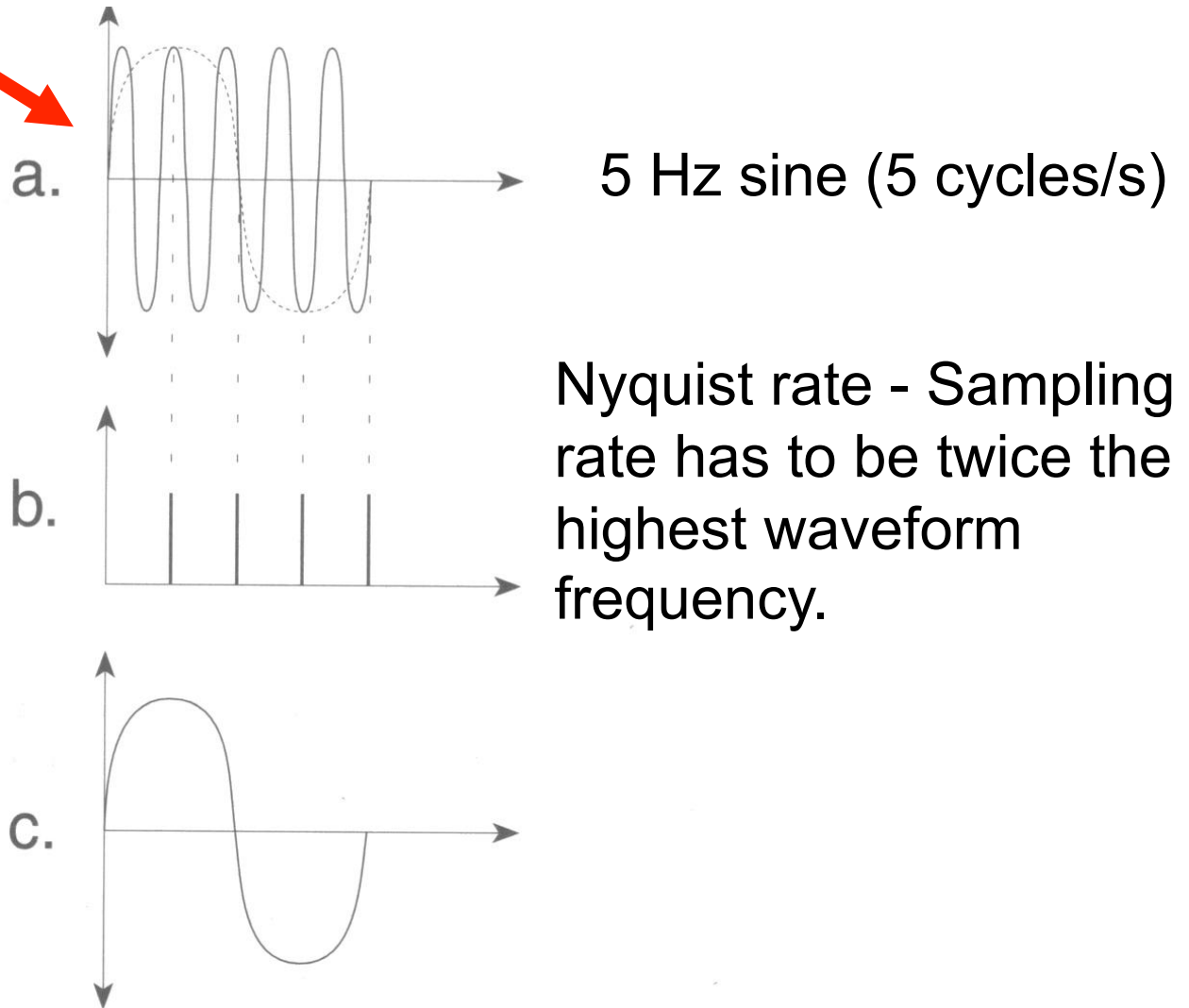
-> 2 Filters, 2 stories





Volcanic behaviour  
(analog signal)

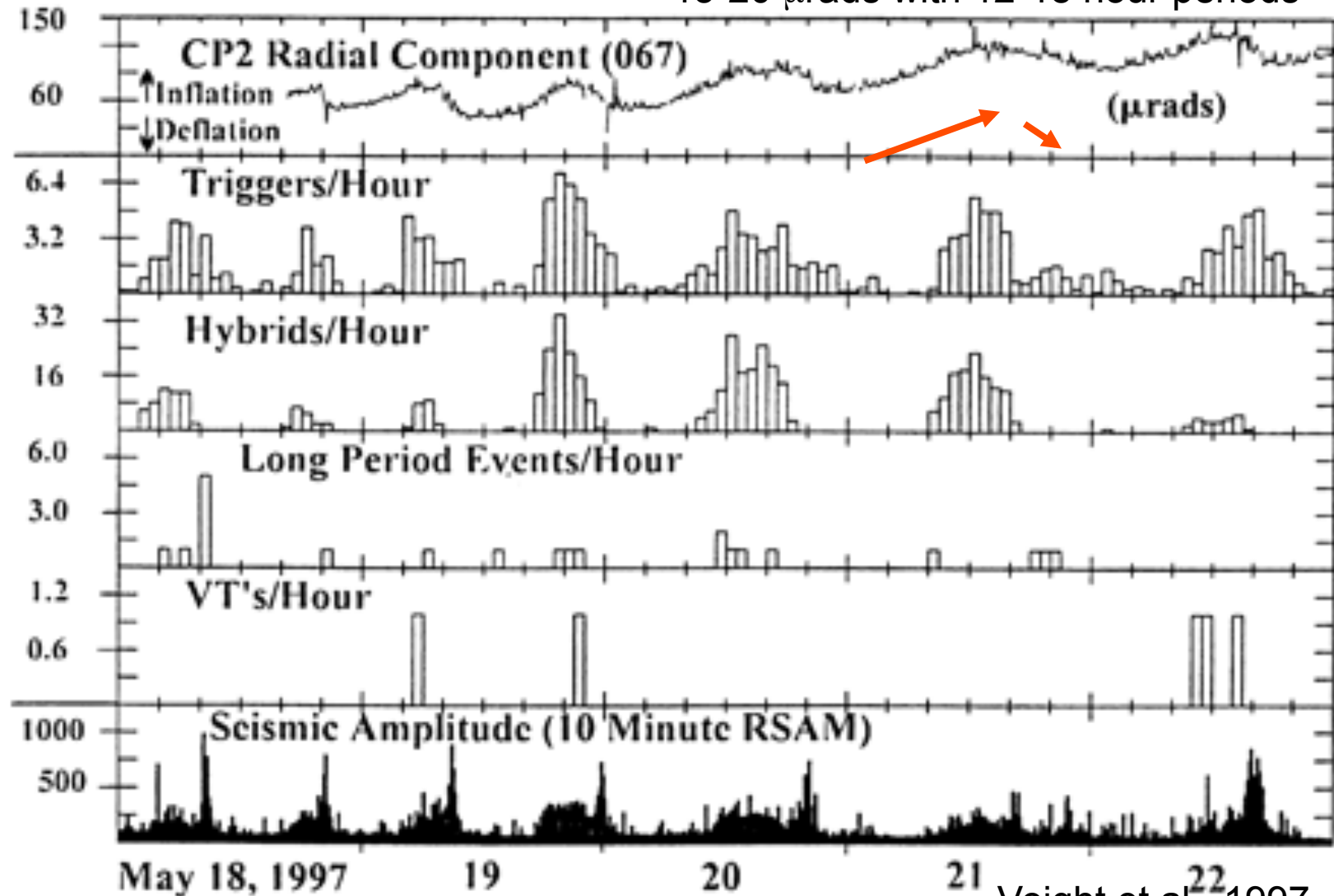
## Undersampling processes of interest



Aliasing : 5 Hz sine is under-sampled, leads to incorrect reproduction of a 1 Hz sine.

# Lucky windows and well-placed instruments

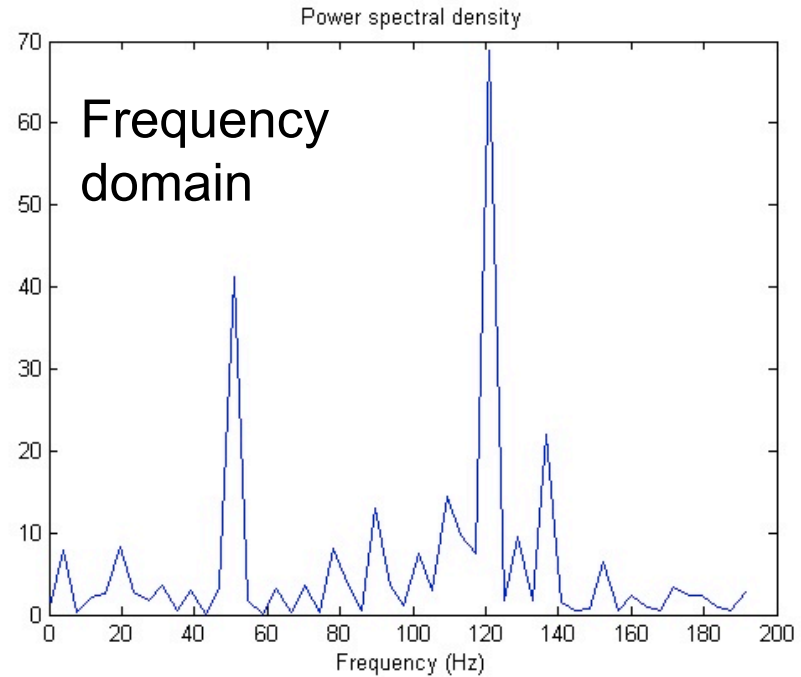
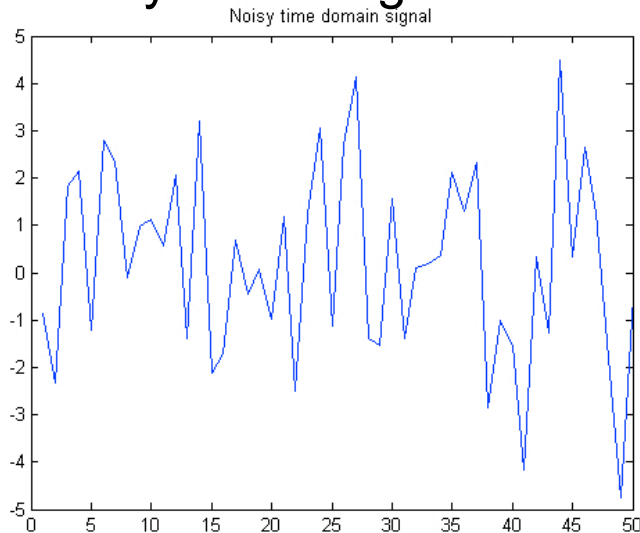
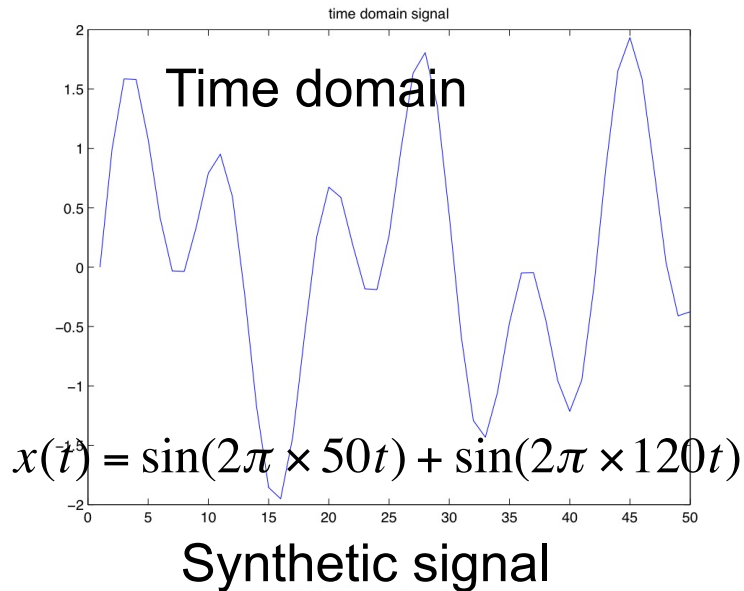
15-20  $\mu\text{rads}$  with 12-18 hour periods



Voight et al., 1997

...Sometimes good data provides a clear picture with minimal analysis

# Understanding patterns by converting data to Frequency Domain



FFT analysis (finite Fast Fourier Transform) converts to frequency domain

Same signal with added noise  
(also indicates the importance of filtering)



# Statistics in Volcanology

Edited by

H. M. Mader, S. G. Coles, C. B. Connor and L. J. Connor



Published by the Geological Society for IAVCEI

Copyrighted Material

## The IAVCEI Commission on Statistics in Volcanology (COSIV)

“to foster statistical analysis of volcanological data. In the last decade or so, researchers have begun to exploit a wide range of analytical and statistical methods for dealing with stochastic and distributed datasets. This represents a major step forward within physical volcanological modeling as we move to a new generation of probabilistic or statistical models. The primary aim of all this new activity is to develop rigorous methods for quantifying the likelihood of outcomes given the set of current and past observations”

-> Link statistical characteristics of data to processes



## Q4 : Where are we going ?

- Models of plumbing system and processes Can never represent the full complexity of the natural phenomenon
- Monitoring data/collection community need to work more with modeling community. (e.g. Plume /flow modeling community).
- More proficient at
- Are field data providing information useful for modeling, or are there other important parameters we are lacking information about.

**Thank You**



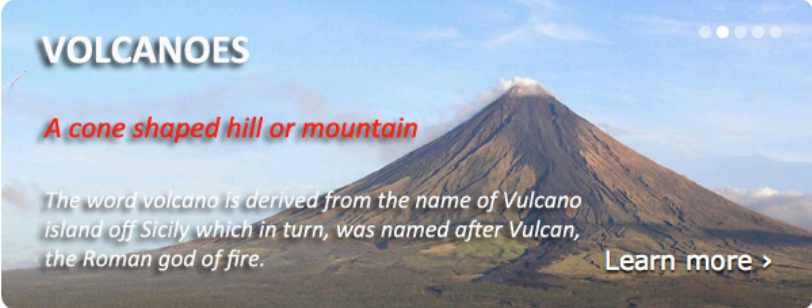


Collaborative volcano research and risk mitigation

Login | Register

Vhub.org is a site for collaborative volcano research and risk mitigation. Use the menus above to browse available simulation tools, data resources and links to all things volcanic.

Want to contribute to VHub? Follow [this link](#) to get started.



#### FIND CONTENT BY TAGS

Popular Tags:

- IAVCEI Commission on Monogenetic Volcanism
- Remote Sensing | Eyjafjallajokull
- Ashfall Graduate Class
- Level: College (Lower level undergrad/nonmajors)
- Level: College (Upper level undergrad/Graduate)
- tephra | Resource Type: Course (Multiple Lessons)
- Satellite measurements | conference | More tags >

Courses, Data Sets/Collections, Educational Materials, Miscellaneous, Offline Tools, Presentations, Publications, Tools, Workshops...  
[All Categories >](#)

Upload your own content! [Get started >](#)

#### WHAT'S NEW IN RESOURCES

- Kliuchevskoi\_1994\_timeline in Data Sets/Collections, Feb 14, 2012
  - Research collaboration, hazard modeling and dissemination in volcanology with Vhub in Presentations, Jan 31, 2012
  - Alessandro\_24Janmeeting in Data Sets/Collections, Jan 24, 2012
  - Unrest at VUELCO's target volcanoes in Data Sets/Collections, Jan 13, 2012
  - Hintz Dissertation Materials in Data Sets/Collections, Jan 12, 2012
  - Expedicion Geofisica de Santiaguito Blog in Miscellaneous, Jan 11, 2012
- [See what else is new >](#)

#### UPCOMING EVENTS

- FEB 20** IAVCEI - IAS 4th International Maar Conference: A Multidisciplinary Congress on Monogenetic Volcanism
  - MAY 21** 1st International Congress on management and awareness in protected volcanic landscapes
  - SEP 23** IAVCEI-CCC 4th Collapse Caldera Workshop
  - NOV 19** Cities on Volcanoes 7 (CoV7)
- [More events >](#)

# VHub.org (lectures will be posted)

